



# LEWIS COUNTY REC

573-215-4000 • Toll Free: 1-888-454-4485

Lewistown, Missouri 63452

[www.lewiscountyrec.coop](http://www.lewiscountyrec.coop)

A Touchstone Energy® Cooperative 

January 2024

## From the desk of Travis Mathes, Manager of Member Services



Happy New Year!! I hope you all had a wonderful holiday season with your family and friends. What a blessing it was at our house to spend time with family. The magic of the holiday season gives relief to the everyday pressures of life for a moment and allows each of us to count our many blessings. 2023

brought many blessings, life changes, and challenges to each of us, I guess that is why they call it life. It is not about the challenges that each of us face, but rather how we choose to deal with those challenges.

As we look forward to 2024, let's hope that some of the challenges in this country begin to ease. Since the onset of the COVID pandemic life and business as we knew in the past has drastically changed. Supply chain pressures still have not eased in the electric industry as we struggle to get materials, transformers, poles, and equipment. Operations is having to order some equipment with 3-to-4-year lead times. If you are planning a new construction or expansion project in 2024, please reach out now to our operations department so they can plan ahead and make every effort to have the materials needed for your project. Not only do we continue to feel the pressure of long lead times receiving materials, but we are also feeling the pressure of increased costs on those materials. In 2023 we have had to absorb increases in materials ranging from 67% to 98%. That's right, the price on some transformers has doubled! So, for example,

a \$15,000 transformer is now roughly \$29,700. Not only are we waiting longer to receive them, but we are also paying almost twice as much for them when they do arrive. Not to mention when we order material today there is no guarantee what the price will be when it does finally arrive.

From top to bottom our 3-Tiered System, Associated Electric (Generation), Northeast Power (Transmission), and Lewis County REC are all feeling the effects of the supply chain and price increases. I like to compare budgets to a household sponge; the sponge can only absorb so much before it begins to run off and can absorb no more. The sponges on all three levels are filling fast just like many of your household budgets.

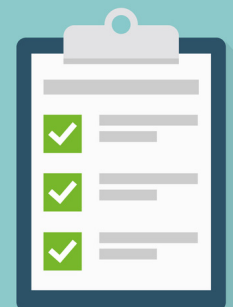
2023 brought with it one of the highest increases in cost of living for Americans in decades, 8.7%. What does that mean to each of us? Simply put it means that it has cost approximately 8.7% more for each American to live over what it cost in 2022. That is a drastic increase in your household budget. These affects have a huge impact on each of our lives and the way we do business. Rest assured that all three tiers of your electric cooperative are making every effort to control the cost of doing business to keep electricity affordable for our member-owners.

Who knows what 2024 is going to look like, but the one thing you can continue to count on is Lewis County REC's Board, Management, and Employees will do every we can to provide safe, reliable and affordable electricity to YOU, our member-owners. Here's hoping that 2024 brings love to your hearts, health to your bodies, and peace and joy to your homes.

### Member Satisfaction Survey

You may receive a survey link by email or a phone call regarding Lewis County REC.

This is a valid survey, and we hope you will take time to participate!



**Mark your calendars for  
Lewis County REC's  
86th Annual Meeting  
Thursday, August 1, 2024  
at Lewis County REC's office,  
Lewistown, MO.**



## Bright ideas




Take advantage of the sun:  
On sunny winter days, open curtain and drapes on south-facing windows, and close them at night.

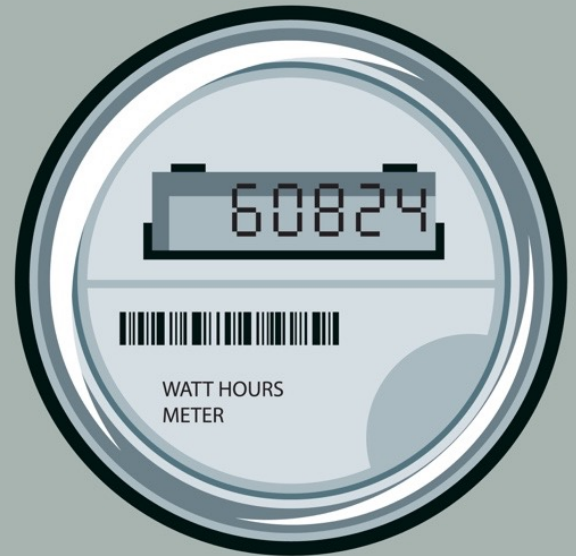
## Engine Block Heater Efficiency

With the frigid temperatures several of you are probably plugging those engine block heaters in. You can save yourself money by purchasing a timer and setting it to turn the block heater on 2-3 hours before you are going to need to start your engine. Letting block heaters run continuously uses several kilowatts and will cause sticker shock when you get your electric bill. Timers are relatively inexpensive and are available at any of the local hardware stores. Keep warm and stay safe.

## DO NOT TAMPER WITH YOUR ELECTRIC METER

Meter tampering can result in electric shock, is illegal and increases electricity rates for other co-op members.

-  **Never break a meter seal.**
-  **Never open a meter base.**
-  **Never remove a meter or alter an entrance cable in any manner.**



If you know or suspect that someone has tampered with their meter, please contact us immediately.

## Correct hazards lurking in your home

- Check electrical outlets for loose-fitting plugs that can cause shocks or start fires. Replace or repair any damaged ones.
- Check light bulbs and appliances to make sure the wattage matches fixture requirements.
- Never use an indoor extension cord for outdoor use.
- If you have young children, use safety covers on unused outlets.
- Do not nail or staple cords to walls, floors, or any other objects.



## TO REPORT AN OUTAGE

CALL (TOLL FREE) 1-888-454-4485  
(LOCAL) 215-4000 24 HOURS A DAY

Before calling, check your breakers or fuses and check with your neighbors to see if they have power

When calling please give the following information:

- Your name
- Meter number and/or location number (if known)
- Cell Phone or Telephone Number affiliated with the account

CALL DURING REGULAR BUSINESS HOURS  
(7:30-4:00)  
FOR ALL OTHER SERVICES